

# South Australian Academic Health Science and Translation Centre





# SA ACADEMIC HEALTH SCIENCE AND TRANSLATION CENTRE

## OVERVIEW OF THE SA CENTRE

The NHMRC Advanced Health Research and Translation Centre (AHRTC) initiative is to identify and recognise the leading centres of collaboration in health and medical research, research translation, research-infused education and training, and outstanding health care.

In March 2015 the SA Academic Health Science and Translation Centre (the SA Centre) was officially recognised as one of the first four NHMRC AHRTC's in Australia.

The SA Centre has brought together, in a whole-of-state collaborative network, the state's academic, research and health care delivery agencies with the aim of continuously enhancing the rate of translation of research into health care, and creating a sustainable and self-improving, high-quality health system.

Through its Members, the SA Centre encompasses the full breadth of health service delivery, covering the whole geography of the state including primary health care and Aboriginal Health as well as SA's peak health consumer agency. In doing so it provides the focal point for a collaborative approach to research and the translation of evidence into patient care whilst ensuring active collaboration of researchers with end-users.

The SA Centre has a strong focus on research, clinical services, education and training, fostering multi-disciplinary collaboration, and State-wide platform technologies to drive the translation of research outcomes into evidence based practice, accelerate translation in disease areas, as well as tackling the grand challenges in health.

The integration of the SA Centre with the system-wide SA Health led Transforming Health strategy aimed at delivering consistent quality healthcare standards and outcomes for all South Australians, provides the vehicle that creates the link between the research outcomes and translating advances in medical research into clinical practice, day-to-day care of patients and training of health professionals.

The multi-directional State-wide translational health 'pipeline' or continuum approach is key to the functioning of the SA Centre which is exemplified by a focus on a research agenda informed by the unmet knowledge needs of the community (e.g. health consumers, clinicians, government), the translation of clinical research to clinical application, and evidence based policy, practice and care for better health outcomes.





# SA ACADEMIC HEALTH SCIENCE AND TRANSLATION CENTRE

## Vision

*To continuously enhance the rate of translation of research into health care in order to create a self-improving and high-quality health system, which is also sustainable*

## Goals

- Align research, training and workforce development, and patient care in order to support a cost-effective and efficient public health system
- Address three grand challenges:
  1. Ensuring health care integration and innovation
  2. Preventing and managing chronic disease across the life-course
  3. Developing a Statewide Translational Health Pipeline.
- Drive change and accelerate translation through identification of areas of mutual cooperation that will provide the greatest health improvements for the SA community.
- Support the Transforming Health agenda through the provision of evidence-based and evaluation-oriented strategic advice.





## SA CENTRE PRIORITIES 2016 - 17

### Research Specific Priority Areas

Aboriginal Health  
Colorectal Cancer  
Cardiac Rehabilitation  
Mental Health  
The First 1000 Days of Life  
Stroke  
Diabetes

### Cross Cutting Thematic Priorities

- **Data Access and Delivery**
- **Translation of Evidence:** Translation of evidence based practice to normalise relative utilisation of health services in SA known to be high e.g. arthroscopy, hysterectomy, c-section, diabetic amputation.
- **Evidence Based Pathways:** Development and consistent implementation and audit of evidence based pathways for known high morbidity and mortality in SA e.g. stroke, diabetes.
- **Translational Pipeline:**
  - Clinical trials
  - Commercialisation



# SA ACADEMIC HEALTH SCIENCE AND TRANSLATION CENTRE

## SA CENTRE MEMBERS

The Members of the SA Centre encompass the full breadth of health service delivery, covering the whole geography of the state including primary health care and Aboriginal Health, as well as SA's peak health consumer agency.

- SA Health
- SAHMRI
- University of Adelaide
- Flinders University
- University of South Australia
- Aboriginal Health Council of South Australia
- Health Consumers Alliance of South Australia
- Adelaide Primary Health Network
- Country SA Primary Health Network
- Cancer Council SA

## GOVERNANCE STRUCTURE

The governance structure of the SA Centre has been established to bring together expertise in the state from multi-disciplinary areas in order to:

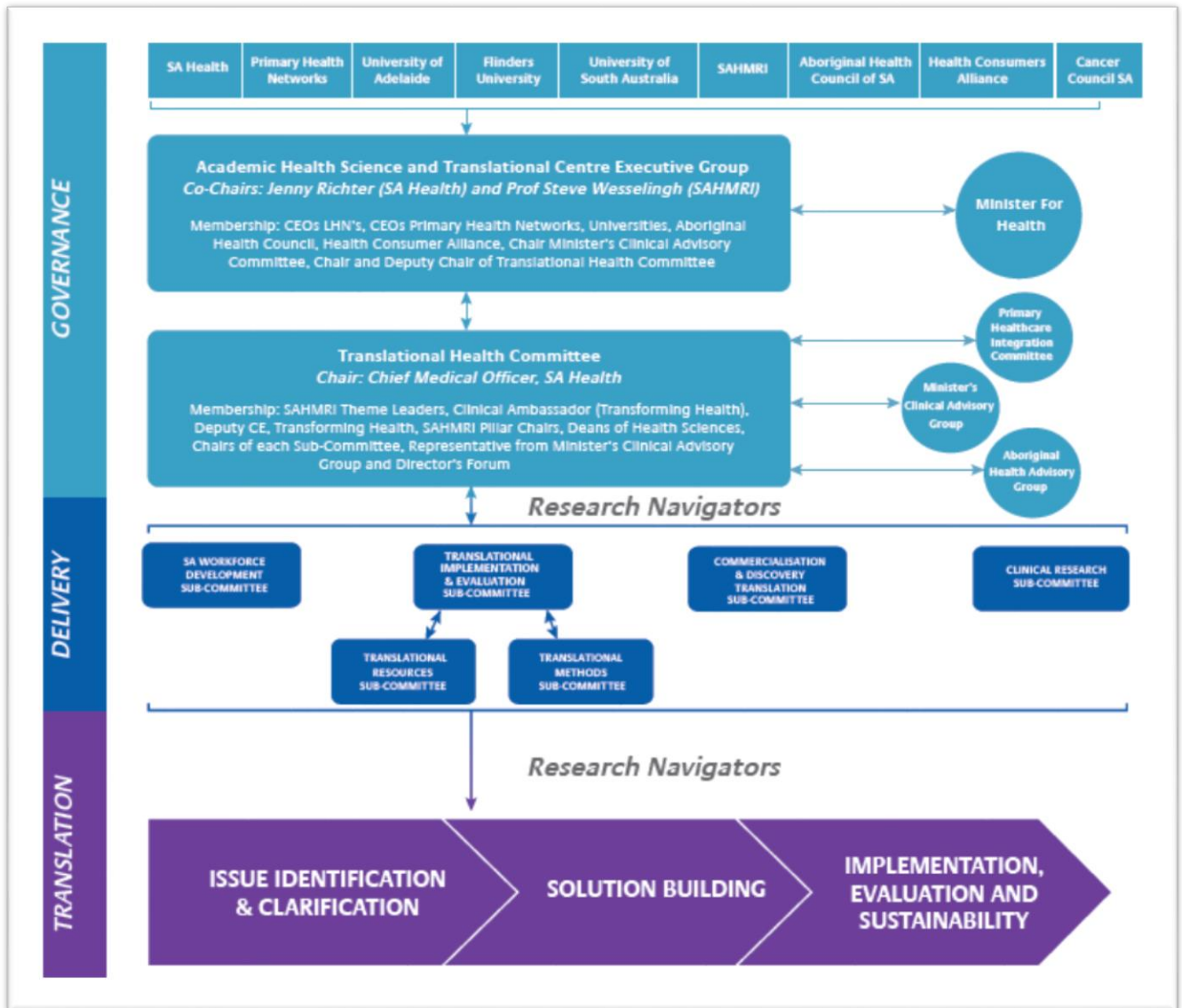
- Provide leadership in translation
- Deliver evidence-based recommendations to improve health care
- Provide strong linkages with primary health care and Aboriginal Health
- Focus on the provision of cost-efficient services and high quality health care
- Increase the effectiveness of the health system
- Share and communicate information to both clinicians and the community
- Promote an evaluation focused and outcome driven health system.

The Governance structure of the SA Academic Health Science and Translation Centre is outlined in the diagram below.





# SA ACADEMIC HEALTH SCIENCE AND TRANSLATION CENTRE



## SA CENTRE CONTACT

**Iris O'Rourke**

Executive Officer

SA Academic Health Science and Translation Centre

P 08 8128 4017

E [iris.orourke@sahmri.com](mailto:iris.orourke@sahmri.com)

<http://academichealthsciencesa.org.au/>





# SA ACADEMIC HEALTH SCIENCE AND TRANSLATION CENTRE

1

## EXECUTIVE GROUP

### Purpose of the Committee:

- Develop an overall model and strategic plan for the AHSTC to achieve better alignment of health care, research, training and workforce development;
- Provide high-level leadership for the ongoing functioning of the AHSTC;
- Support the Transforming Health project through the provision of evidence-based and evaluation-oriented strategic advice;
- Provide strategic advice to the Minister for Health on:
  - Health and Medical Research;
  - Health Education;
  - Evidence-based service delivery.
- Identify areas of mutual cooperation in the fields of service delivery, education, training and research;
- Ensure effective communications to the health community and wider public about the purpose, specific collaborative work and achievements of the AHSTC;

### Members:

- Steve Wesselingh (Co-Chair), SAHMRI
- Len Richards (Co-Chair), SA Health
- Paddy Phillips, SA Health, Chair Translational Health Committee
- Dorothy Keefe, Transforming Health
- Alastair Burt, University of Adelaide
- Robert Vink, University of South Australia
- Julia Squire, Central Adelaide Local Health Network
- Michael O'Keefe, Southern Adelaide Local Health Network
- Naomi Dwyer, Women's and Children's Health Network
- Jackie Hanson, Northern Adelaide Local Health Network
- Maree Gerhagty, Country Health SA
- Kim Hosking, Country SA PHN
- Malcolm Ellis, Adelaide PHN
- Lincoln Size, Cancer Council
- Michael Cousins, Health Consumers Alliance
- Caroline Miller, SAHMRI
- Shane Mohor, Aboriginal Health Council SA
- Gerry O'Callaghan, Clinical Senate
- Michael Kidd, Flinders University





# SA ACADEMIC HEALTH SCIENCE AND TRANSLATION CENTRE

2

## TRANSLATIONAL HEALTH COMMITTEE

### Purpose of the Committee:

- Implement the model and strategic plan developed by the Executive Group for the AHRTC to achieve better alignment of health care, research, training and workforce development
- Support the Transforming Health program through the provision of evidence-based and evaluation-oriented strategic advice
- Provide strategic advice to the Executive Group
- Identify areas of mutual cooperation in the fields of service delivery, education, training and research

Each of the Subcommittees will report through to this Committee.

### Members:

- Paddy Phillips (Chair), SA Health
- Steve Wesselingh, SAHMRI
- Neil Dear, SAHMRI
- Alex Brown, SAHMRI
- Steve Nicholls, SAHMRI
- Julio Licinio, SAHMRI
- Tim Hughes, SAHMRI
- Alastair Burt, University of Adelaide
- Robert Vink, University of South Australia
- Michael Kidd, Flinders University
- Michael Cousins, Health Consumers Alliance SA
- Derek Chew, Flinders
- Kurt Towers, Northern Adelaide Local Health Network
- Dorothy Keefe, SA Health
- Ian Olver, University of South Australia
- David Roder, University of South Australia
- Caroline Miller, SAHMRI
- Stephanie Allen, SA Health
- Chris Proud, SAHMRI
- Maria Makrides, SAHMRI
- John Coveney, School of Health Sciences, Flinders
- Dan Worthley, University of Adelaide







# SA ACADEMIC HEALTH SCIENCE AND TRANSLATION CENTRE

3

## TRANSLATIONAL IMPLEMENTATION AND EVALUATION SUBCOMMITTEE

### Purpose of Subcommittee:

- To advise on the collection and analysis of evidence to evaluate implementations of change to the health system/environment in South Australia, particularly effects on health outcomes.
- Draw on its expertise to identify current problems/issues that exist in the health system and oversee the work of the Translational Resources and Methods Subcommittees in solving the proposed problems/issues.
- Responsible for providing solutions for implementation within the health system to the Translational Health Committee.

### Members:

- Dorothy Keefe (Chair), SA Health
- David Roder (Chair), SAHMRI
- Caroline Miller, SAHMRI
- Michael Cousins, Health Consumers Alliance of South Australia
- Ben Mol, University of Adelaide
- John Coveney, Flinders University
- Alison Kitson, University of Adelaide
- Andy McPhee, Women's and Children's Hospital
- Gerry O'Callaghan, Royal Adelaide Hospital
- Don Howie, University of Adelaide
- Guy Maddern, the Queen Elizabeth Hospital
- Julio Licinio, SAHMRI
- Alex Brown, SAHMRI
- Gary Wittert, SAHMRI
- Stephen Nicholls, SAHMRI
- Jim Jannes, the Queen Elizabeth Hospital
- Andrew Bersten, Flinders University
- Craig Lockwood, Joanna Briggs Institute
- Michele McKinnon, SA Health
- Ian Olver, UniSA





# SA ACADEMIC HEALTH SCIENCE AND TRANSLATION CENTRE

## 4 SA WORKFORCE AND DEVELOPMENT SUBCOMMITTEE

### Purpose of Subcommittee:

- To identify strategies to develop the workforce for the future.
- Advise on implementation plans related to Workforce development.
- Play a role in advising more broadly about health workforce issues in South Australia.

### Members:

- Alastair Burt (Chair), University of Adelaide
- Marie Wilson, UniSA
- Erma Ranieri, Commissioner for Public Sector Employment
- Paul Worley, Flinders University
- Gill Norrington, SA Health
- Kathy Mott, SAHMRI
- Nigel Stewart, Pt Augusta Hospital
- Esther May, University of South Australia

## 5 RESEARCH COMMERCIALISATION SUBCOMMITTEE

### Purpose of Subcommittee:

- Advise on the approach and mechanisms to be used to improve the pipeline for commercialisation, from discovery to value-added investable assets.
- Advise on appropriateness of models for the identification of projects with commercial potential, as well as funding mechanisms for developing the potential IP asset
- Oversee the development of identified assets to spin-out stage, ensuring alignment of partner organisations

### Members:

- Meera Verma (Chair), TechinSA
- Steve Wesselingh, SAHMRI
- Andrew Dunbar, OSTAR, DSD
- Melissa McBurnie, MRCF
- John Hopwood, SAHMRI
- Kate Phillips, SALHN
- Steve Nichols, SAHMRI
- Tim Hughes, SAHMRI
- Heather Croucher, SAHMRI
- Steve Rodda, UniSA Ventures
- Anthony Francis, Flinders Partners
- Kiara Bechta-Metti, University of Adelaide Enterprise
- Greg Johansson, Medvet Pty Ltd (Central Adelaide LHN)
- Philip Robinson (WCHN)





# SA ACADEMIC HEALTH SCIENCE AND TRANSLATION CENTRE

6

## CLINICAL RESEARCH SUBCOMMITTEE

### Purpose of Subcommittee:

- Advise on clinical trial research issues in South Australia, and to facilitate the development of a standardised and efficient clinical trial research process for the State.
- Identify and advise on common barriers and issues that compromise clinical trial research in South Australia.
- Identify strategies to facilitate clinical trial research in South Australia.
- Advocate for streamlined, timely and more consistent processes to facilitate clinical trial research activities in South Australia.

### Membership:

- Stephen Nicholls (Chair), SAHMRI
- Stephen McDonald, RAH
- Jodie Dodd, WCHN
- John Beltrame, TQEH
- Nick Antic, Adelaide Institute for Sleep Health
- David Watson, Flinders Medical Centre
- Mary Steen, UniSA
- Susan Hillier, UniSA
- Philip Tideman, Flinders Cardiac Clinic
- Jenny Richter, SA Health
- Paddy Phillips, SA Health
- Marco Bacanti, Health Industries SA
- Villis Marshall, SA Health
- Alison Jones, SA Health
- Naomi Dwyer, WCHN





# SA ACADEMIC HEALTH SCIENCE AND TRANSLATION CENTRE

7

## PRIMARY HEALTHCARE INTEGRATION COMMITTEE

### Purpose of the Committee:

- Ensure primary care is embedded across all of the clinical streams.
- Advise on integrated healthcare in order to improve efficiencies in primary healthcare delivery, sustainability and return on investment, and provide coordinated, patient-centred care,
- Identify current problems/issues and opportunities that exist in the integration and coordination of primary health care services within the primary health care sector, and primary health care delivery.

### Membership:

- Deb Lee (Chair), Adelaide PHN
- Catherine Turnbull, SA Health
- Shane Mohor, Aboriginal Health Council SA
- Nigel Stocks, University of Adelaide
- Richard Reed, Flinders University
- Victoria (Tori) Wade, University of Adelaide
- Kim Hosking, Country SA PHN
- Karen Grimmer, University of SA

